



DISC LED Pendant Mount™

The DISC LED Pendant mount is the perfect for lighting Gym-Volleyball. At 81,303 Lumen's it is the brightest Indirect Gym LED illuminating courts to higher light levels with fewer watts. Available with Wireless Bluetooth Network Lighting Controls



TECHNICAL INFORMATION

Daylight harvesting 390 Watts = 70 Foot-Candles

- Part No.** DISC LED
- Specify:** (Wattage, Voltage & Mounting)
- Input Voltage:** 120-277 or 347-480
- CCT:** 5100
- CRI:** Ra85
- Dimmable:** PWM 0-10V
- Weight:** 30 lbs.
- LED Chip:** NICHIA
- DRIVER INVENTRONICS:** Remote Driver available.
- NTC:** Thermal Sensing and Protection for LED Module

- Housing and Heat sink:** Pure Aluminum
- Lens:** Clear Safety Glass (CGL), Clear Polycarbonate Lens (CPL) or Frosted (FPC)
- Working Temperature:** -30 to 45C
- Power Factor:** 99.9
- Rated for:** Damp Locations - NO Fans
- Warranty:** 10 year
- Accessories:** Wireless Bluetooth Network Controls: Occupancy Motion Sensors, Dimming, High-end Trim and Scheduling.
- Lumen Output:** See below.



		VOLTS			
		120	277	347	480
INDIRECT - 73,471 LUMEN	WATTS	481	473	479	478
	AMPS	4.01	1.8	1.39	1.05
INDIRECT - 81303 LUMEN	WATTS	565	552	561	560
	AMPS	4.71	2.08	1.61	1.16

EXAMPLE:	DISC-LED	IP INDIRECT PENDANT	81,303	120-277V	DIM	OS	LENS
SECTIONS:	SERIES	MOUNTING OPTION	NOMINAL LIGHT	INPUT VOLTAGE WIRELESS	0-10V	SENSORS	
OPTIONS:	DISC-LED	IP	73,471 LUMENS	120-277V	DIM-PWM 0-10V	OS	CGL
			81,303 LUMENS	347-480V	HT-HIGHEND TRIM	HT	CPL
				277-480V	DAYLIGHT HARVESTING	DH	FPC

BEST Lights are made in Michigan



DISC LED Pendant Mount™



The DISC LED Pendant mount is the perfect for lighting Gym-Volleyball. At 81,303 Lumen's it is the brightest Basketball / Volleyball LED illuminating courts to higher light levels with fewer watts. Available with Wireless Bluetooth Network Lighting Controls

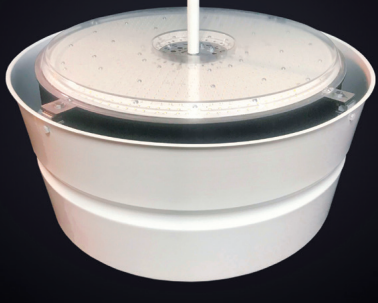
CASE STUDY

UWM Sports Complex Pontiac, MI

- Building Size 320' x 250' x 34'E x 70'R
- 140 - 552 Watt Indirect DISC LED.
- 1.43 Watts per Sq. Ft. 75 Avg. FC.
- Wireless Bluetooth Dimming.
- 2 Bluetooth switches with 2 Zones.
- 2 Light levels 50% and 100%.
- No Glare in Players Eyes.
- No Shadows on the floor.
- Delivered the lights within 5 weeks.
- Client extremely pleased.



PENDANT



TECHNICAL INFORMATION

Part No. DISC LED

Specify: (Wattage, Voltage & Mounting)

Input Voltage: 120-277 or 347-480

CCT: 5100

CRI: Ra85

Dimmable: PWM 0-10V

Weight: 30 lbs.

LED Chip: NICHIA

DRIVER INVENTRONICS: Remote Driver available.

NTC: Thermal Sensing and Protection for LED Module

Housing and Heat sink: Pure Aluminum

Lens: Clear Safety Glass (CGL) or Frosted Polycarbonate Lens (FPC)

Working Temperature: -30 to 45C

Power Factor: 99.9

Rated for: Damp Locations - NO Fans

Warranty: 10 year

Accessories: Wireless Bluetooth Network Controls: Occupancy Motion Sensors, Dimming, High-end Trim and Scheduling.

Lumen Output: See below.



		VOLTS			
		120	277	347	480
INDIRECT - 73,471 LUMEN	WATTS	481	473	479	478
	AMPS	4.01	1.8	1.39	1.05
INDIRECT - 81303 LUMEN	WATTS	565	552	561	560
	AMPS	4.71	2.08	1.61	1.16

EXAMPLE:	DISC-LED	IP INDIRECT PENDANT	81303	120-277V	DIM	OS	LENS
SECTIONS:	SERIES	MOUNTING OPTION	NOMINAL LIGHT	INPUT VOLTAGE WIRELESS	0-10V	SENSORS	
OPTIONS:	DISC-LED	IP	73,471 LUMENS	120-277V	DIM-PWM 0-10V	OS	CGL
			81,303 LUMENS	347-480V	HT-HIGHEND TRIM	HT	CPL
				277-480V	DAYLIGHT HARVESTING	DH	



BEST Lights are made in Michigan



Underwriters Laboratories, Inc. c
Approved for damp locations.

