

**The DISC LED™
SERIES**

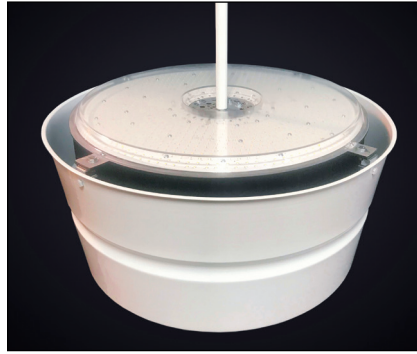
**INDIRECT and DIRECT
67,000 to 80,000 Lumens DLC 5.0**



The **DISC LED** is perfect for lighting all types of indoor sport, manufacturing facilities and Air Domes with ceilings 18' to 125' feet high.

General Information

Part No. DISC LED
Specify: (Wattage, Voltage & Mounting)
Input Voltage: 120-277 or 347-480
CCT: 5100
CRI: Ra85
Dimmable: 0-10V
Weight: 30 lbs.
LED Chip: NICHIA
DRIVER: INVENTRONICS
Housing and Heat sink: Aluminum / Polycarbonate Lens
Working Temperature: -30 to 50C
Power Factor: 99.9
Rated for: Damp Locations
Warranty: 10 year
Accessories: Wireless Dimming, High-end Trim and Occupancy Sensors.
Lumen Output: See below.



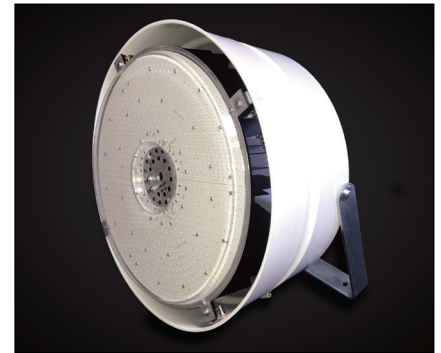
PENDENT



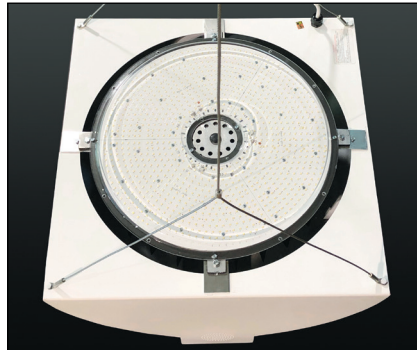
CABLE



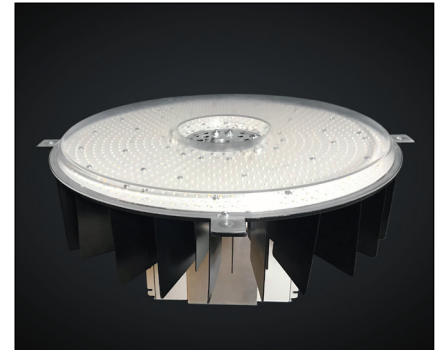
DIRECT



UNISTRUT / POLE / WALL
Aims in Any Direction



HPP RETROFIT KIT



THE DISK

INDIRECT – 72491 Lumen				
Watts	481	473	479	478
Volts	120	277	347	480
Amps	4.01	1.80	1.39	1.05

INDIRECT – 80303 Lumen				
Watts	565	552	561	560
Volts	120	277	347	480
Amps	4.71	2.08	1.61	1.16

Direct – 67602 Lumen				
Watts	484	474	479	479
Volts	120	277	347	480
Amps	4.04	1.84	1.39	1.00

Direct – 80303 Lumen				
Watts	565	552	56	560
Volts	120	277	347	480
Amps	4.71	2.08	1.61	1.16

EXAMPLE:	DISC-LED	DIR	72000	120-277V	DIM-HT	OS
SECTIONS:	Series	Mounting	Nominal Light Output	Input Voltage	0-10 Wireless	Sensors
OPTIONS:	DISC-LED	IP	72,000 Lumens	120-277V	DIM	OS
		IC	80,000 Lumens	347-480V	HT-Highend Trim	DH
		IUPW				
		DIR				
		RETRO				



BEST Lights are made in Michigan

www.bestlights.com

